



GMT MONTHLY MEMBERSHIP PROGRESS REPORT

Results as of: 12/31/2019

Multiple District 26

LOCATION: MISSOURI

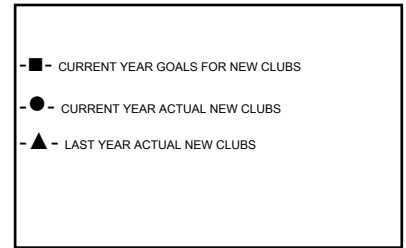
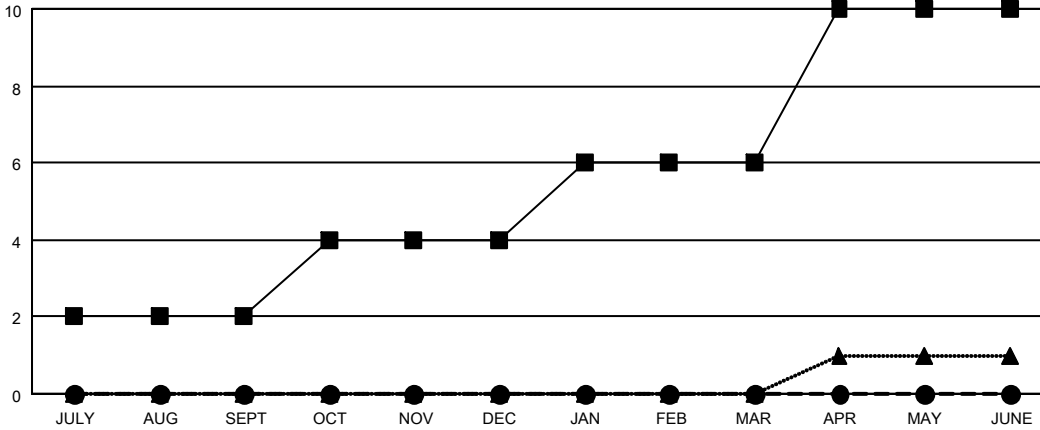
GMT: OPEN

GMT CA 1

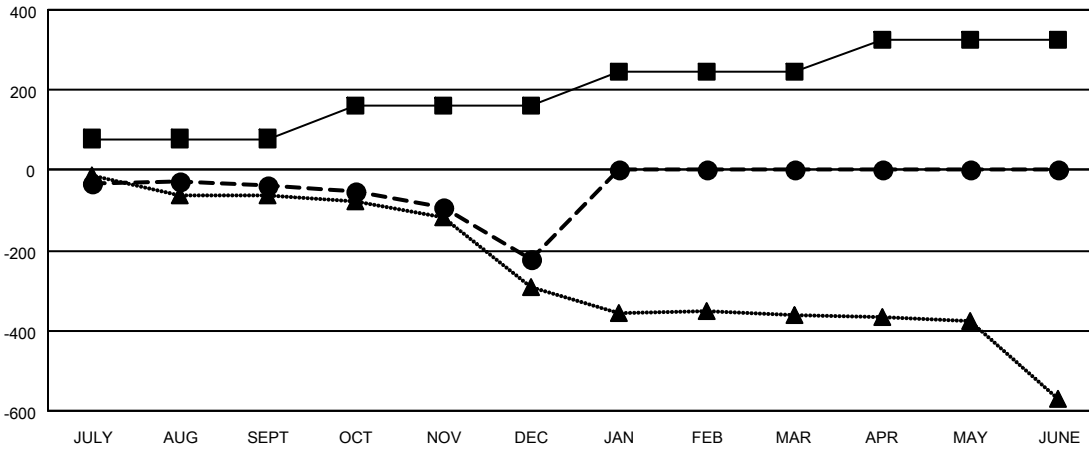
Clubs			
RESULTS FOR 2019-2020			
QUARTER	NEW CLUB GOAL	NEW CLUBS	DROPPED CLUBS
JULY/AUG/SEPT	2	0	1
OCT/NOV/DEC	2	0	3
JAN/FEB/MAR	2	0	0
APR/MAY/JUNE	4	0	0

Members			
RESULTS FOR 2019-2020			
QUARTER	MEMBER GROWTH NET GOAL	MEMBER GROWTH ACTUAL	DROPPED MEMBERS ACTUAL (including transfers)
JULY/AUG/SEPT	79	193	210
OCT/NOV/DEC	80	105	283
JAN/FEB/MAR	87	0	0
APR/MAY/JUNE	81	0	0

GOALS AND ACTUAL NEW CLUBS CUMULATIVE



GOALS AND ACTUAL MEMBERS CUMULATIVE



DROPPED CLUBS: 4	105 CLUBS OF 320 ADDED 1 OR MORE NEW MEMBERS	<u>GENDER DISTRIBUTION</u>
		MALE 5,965 (73.15%)
		FEMALE 2,190 (26.85%)
<u>DROPPED MEMBERS</u>	CLICK HERE FOR CUMULATIVE MEMBERSHIP DATA	TOTAL FAMILY UNIT MEMBERS 1,362
DECEASED 48		FAMILY MEMBERS PAYING HALF DUES 699
CLUB CANCELLED 30		
OTHER 415		
TOTAL 493		